



**Is it more effective than sport?**  
Sport is obviously very beneficial, but it can't fight cellulite. So you need to combine sport with a course of *Endermologie* treatment.

**Can it replace liposuction?**  
Liposuction techniques are designed to help with body shape and volume, but they can't solve problems of cellulite and skin appearance. Consequently, *Endermologie* is an excellent complement to plastic surgery.

**Has the effectiveness of the technique been proven scientifically?**  
The results obtained by the LPG technique have been confirmed by scientific studies conducted in leading American and European universities.



Week 0



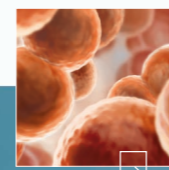
Week 8

These photos were taken with the Photographic Evaluation Module (Results 6) specially designed by LPG Systems. Results vary according to the morphology, physiology and eating habits of the individual. Regular treatments are recommended to maintain the results obtained.



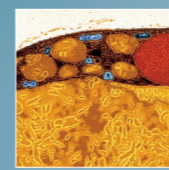
## A non-invasive painless treatment

The LPG method is practised by health and beauty professionals exclusively trained in and equipped with the **Cellu M6**. **Cellu M6 Keymodule** high technology enables the practitioner to achieve **optimum tissue mechanisation**, notably in the hypodermal fat cells. This cutaneous gymnastics help to **reharmonise the connective tissue** and increase both blood and lymph circulation, thus promoting the elimination of metabolic waste. **The result: a slimmer, more contoured body and a smoother, firmer skin.** Furthermore, this painless process produces a **feeling of well-being**; it is relaxing; and it involves no medical treatment or the administration of any chemical substances. It simply consists of restoring and activating a number of the organism's and the skin's natural functions.



The orange peel aspect of cellulite comes from anomalies occurring in the cutaneous and sub-cutaneous tissue.

## At what stage is your cellulite?



Without adequate treatment, the orange peel effect settles in and tends to worsen over time. On the buttocks and thighs one can distinguish **four stages of cellulite**:

- 0 The skin has a smooth aspect without any irregularities on the surface, whatever the position or pinching applied.
- 1 The skin has an orange peel aspect only when pinched or in a seated position on a hard surface.
- 2 The orange peel aspect is visible in a standing position, the smooth aspect is no longer visible in a lying down position.
- 3 The orange peel aspect is permanent and appears naturally whether in a standing or lying down position.

Endermologie®



**LPG SYSTEMS S.A.**  
**Headquarters**  
Technoparc de la Plaine  
30, rue du Dr Abel  
BP 35 · 26902 Valence  
Cedex 09 · France  
Tél.: +33 (0)4 75 78 69 00  
Fax: +33 (0)4 75 42 80 85  
www.lpgsystems.com

**International // Marketing**  
2753, route des Dolines  
BP 243 · 06905 Sophia-Antipolis  
Cedex · France  
Tél.: +33 (0)4 92 38 39 00  
Fax: +33 (0)4 92 96 09 65

# Endermologie®

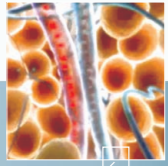
## The anti-cellulite reference\*



\* To date over 140 million treatments have been given around the world.

540 - 5 - GB - LPG Systems - S.A. au capital de 2.000.000 euros - Siren 335 838 838 RCS Romans - © Copyright LPG Systems 2006 - LPG, Cellu M6, Keymodule, Endermologie and Results 6 registered trademarks. Any reproduction - even in part - is strictly prohibited. Non-binding photos.

Réf. : 100 52 86



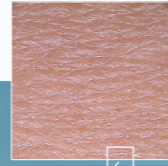
Fat Cells

## What is cellulite?

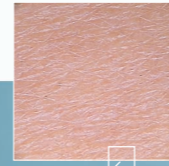
Essentially a feminine phenomenon, cellulite results from a **build-up of fat in the adipocytes** (subcutaneous fat cells) and the **retention of water** in the surrounding areas (dermis and hypodermis). As the adipocytes continue to grow, the envelopes containing them lose their shape and pull on their cutaneous anchoring points, giving the skin its "orange peel" appearance. At this stage, the main problem is that the process is self-sustaining as a result of a reduction in blood circulation, causing in turn **stagnation of the metabolic waste**, nutritional impoverishment and congestion of the connective tissue, which loses its elasticity and becomes fibrous. This extremely unsightly condition results in cellulitic areas that are **unresponsive to physical exercise** and to even the strictest slimming diets.



## With Endermologie®, LPG revolutionizes anti-cellulite treatment



Week 0



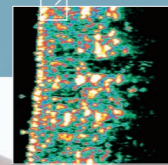
Week 8

## The results: undeniable and evaluated

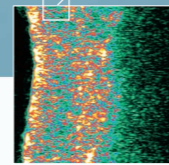
For the sessions, which last around 35 minutes at the rate of two a week, the patient is given special clothing, the LPG Bodywear, which respects her modesty. The **remarkable results** of this method can be objectified by taking measurements and photos before and after, with the **Results 6**. The changes are produced in the areas most in need without causing any decrease in volume in areas where such a decrease would be undesirable. In addition, *Endermologie*, through its relaxing and soothing action, has an indisputable **stress-lowering effect**.

(Ultrasound scan 20 MHz)

Week 0



Week 8



## 7 Questions about Endermologie®

### Is it new?

LPG has been in use for over fifteen years; sessions can be counted in their millions, and with every day that passes tens of thousands of women feel the benefits.

### Is it painless?

This is a personalised treatment adapted to the skin sensitivity of each individual patient, it is never painful.

### Does it help you lose weight?

*Endermologie* acts on the cellulite as well as on the quality and appearance of the skin; this may be accompanied by some weight loss.

### Can it replace a diet?

Whilst a sensible diet can help you to maintain a healthy weight, *Endermologie* acts effectively on cellulite and on body shape and volume.



## Your ally against cellulite, your source of well-being

Suitable for all ages, *Endermologie* is especially effective against the effects of time. The fact is that circulatory disorders tend worse over time; cellulite's "orange peel" appearance takes hold, and the skin loses its elasticity. By increasing local microcirculation, **the LPG method** restores the trophicity of the connective tissue and thus **improves skin appearance and tone**.

▷ If you require further information, seek the advice of your practitioner, who is a specialist and will answer all your questions.